

INDOOR UNIT

CEILING CASSETTE -4way-

FDT



FDT 40/50/60/71/
100/125/140V



Wireless remote control

Wired remote control



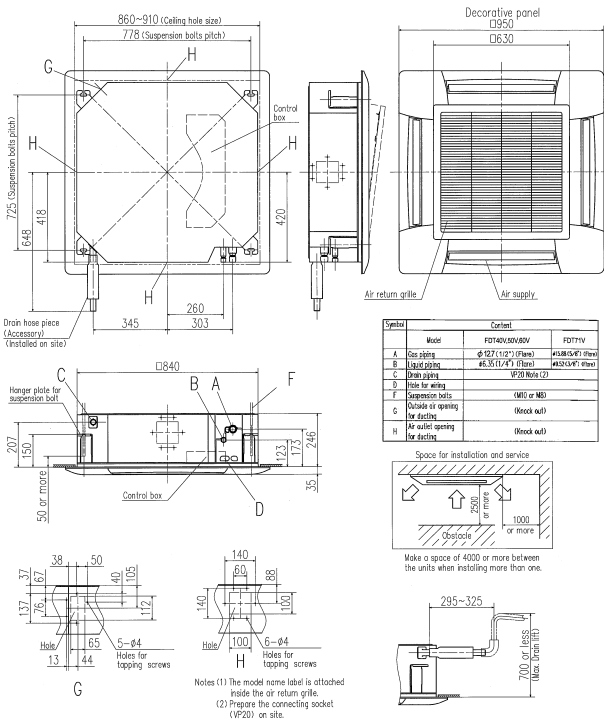
RCN-T-36W-E
(Option)



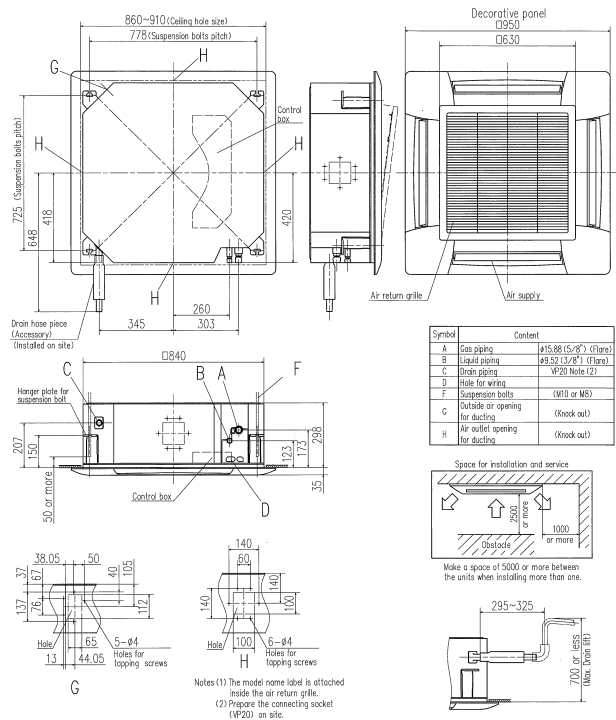
RC-E3
(Option)

Outline drawing (Unit:mm)

Model FDT40,50,60,71V

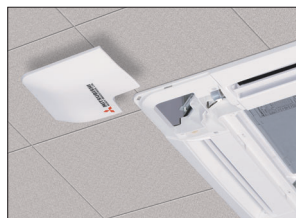


Model 100,125,140V



Point 1 Arrangement of installation balance of indoor unit

Checking from access ports with detachable covers at each corner, arrangement of installation balance of indoor unit can be available without removing a panel. Workability is improved and time of installation is reduced.



For wireless control simply insert the infra-red receiver kit on a corner of the panel



wireless remote control

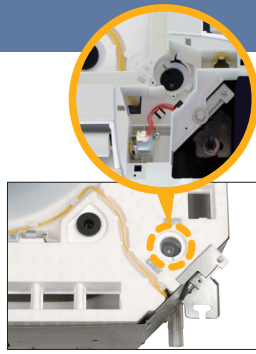


RCN-T-36W-E

Point
2

Easy checking of drain pan

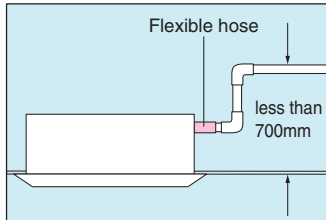
Easy checking of drain pan condition is available by removing corner lid only. Due to new design changing fan motor is available without removing a panel. Temporally setting of drain pan is also available.



Point
3

700mm Drain Pump

Drain can be discharged upwards by 700mm from the ceiling surface. It allows a piping layout with a high degree of freedom Depending on the installation location and 260mm flexible hose as a standard equipment supports easy workability.



SPECIFICATIONS

Set model name			FDT40ZHXV	FDT50ZHXV	FDT60ZHXV
Indoor name			FDT40V	FDT50V	FDT60V
Outdoor name			SRC40ZHX-S	SRC50ZHX-S	SRC60ZHX-S
Power source			1Phase 220-240V 50Hz , 1Phase 220V 60Hz		
Type			Inverter		
Nominal cooling capacity (Min~Max)	ISO-T1(JIS)	kW	4.0 (1.8~4.7)	5.0 (2.2~5.6)	5.6 (2.8~6.3)
	ISO-T1(JIS)	kW	4.5 (2.0~5.4)	5.4 (2.5~6.3)	6.7 (3.1~7.1)
Nominal heating capacity (Min~Max)	ISO-T1(JIS)	kW	4.5 (2.0~5.4)	5.4 (2.5~6.3)	6.7 (3.1~7.1)
	ISO-T1(JIS)	kW	4.5 (2.0~5.4)	5.4 (2.5~6.3)	6.7 (3.1~7.1)
Input	Cooling/Heating	kW	0.93/1.15	1.29/1.29	1.57/1.85
COP	Cooling/Heating		4.30/3.91	3.88/4.19	3.57/3.62
Energy label	Cooling/Heating		A/A	A/A	A/A
Inrush current		A	5		
Sound level*1	Indoor	dB(A)	Hi:33 Me:31 Lo:30		
	Outdoor		47		
Air flow	Indoor	CMM	Hi:18 Me:16 Lo:14		
	Outdoor		40		
Indoor unit	Exterior dimensions	Height x Width x Depth	mm 246x840x840		
	Panel	Height x Width x Depth	mm 35x950x950		
	Net weight	Unit+Panel	kg 22+5.5		24+5.5
Panel+Remote control			T-PSA-36W-E+RCN-T-36W-E, T-PSA-36W-E+RC-E3		
Outdoor unit	Exterior dimensions	Height x Width x Depth	mm 640x800(+71)x290		
	Net weight		kg 45		
	Type of compressor		Scroll		
Ref.control		EEV			
Ref.amount precharged		kg(m)	1.4(15)		
Ref.piping size	Liquid/Gas	ø	6.35/12.7		
Range of usage	Ref.piping length		m 30		
	Vertical height difference	between O/U and I/U	<O/U	20	
		>O/U	20		
Limitations	Air temp.	Cooling	I/U	18~30	
			O/U	-15~43*2	
		Heating	I/U	18~30	
			O/U	-15~24	

SPECIFICATIONS

Set model name			FDT71VNV	FDT100VNV	FDT125VNV	FDT140VNV	FDT100VSV	FDT125VSV	FDT140VSV
Indoor name			FDT71V	FDT100V	FDT125V	FDT140V	FDT100V	FDT125V	FDT400V
Outdoor name			FDC71VN	FDC100VN	FDC125VN	FDC140VN	FDC100VS	FDC125VS	FDC140VS
Power source			1Phase 220-240V 50Hz , 1Phase 220V 60Hz				3phase,380-415V 50Hz/380V 60Hz		
Type			Inverter						
Nominal cooling capacity (Min~Max)	ISO-T1(JIS)	kW	7.1 (3.2~8.0)	10.0 (4.0~11.2)	12.5 (5.0~14.0)	14.0 (5.0~16.0)	10.0 (4.0~11.2)	12.5 (5.0~14.0)	14.0 (5.0~16.0)
	ISO-T1(JIS)	kW	8.0 (3.6~9.0)	11.2 (4.0~12.5)	14.0 (4.0~16.0)	16.0 (4.0~18.0)	11.2 (4.0~12.5)	14.0 (4.0~16.0)	16.0 (4.0~18.0)
Input	Cooling/Heating	kW	1.90/2.07	2.76/2.74	4.05/3.77	4.65/4.54	2.76/2.74	4.05/3.77	4.65/4.54
COP	Cooling/Heating		3.74/3.86	3.62/4.09	3.09/3.71	3.01/3.52	3.62/4.09	3.09/3.71	3.01/3.52
Energy label	Cooling/Heating		A/A	A/A	B/A	B/B	A/A	B/A	B/B
Inrush current		A	5						
Sound level*1	Indoor	dB(A)	Hi:35 Me:33 Lo:31	Hi:40 Me:37 Lo:35	Hi:42 Me:40 Lo:37	Hi:43 Me:41 Lo:38	Hi:40 Me:37 Lo:35	Hi:42 Me:40 Lo:37	Hi:43 Me:41 Lo:38
	Outdoor		48	49	Cooling:50 Heating:51	51	49	Cooling:50 Heating:51	51
Air flow	Indoor	CMM	Hi:21 Me:19 Lo:17	Hi:27 Me:24 Lo:20	Hi:30 Me:27 Lo:23	Hi:30 Me:27 Lo:23	Hi:27 Me:24 Lo:20	Hi:30 Me:27 Lo:23	Hi:30 Me:27 Lo:23
	Outdoor		Cooling:60 Heating:74	Cooling:76 Heating:74	Cooling:75	Heating:73	Cooling:76 Heating:74	Cooling:75	Heating:73
Indoor unit	Exterior dimensions	Height x Width x Depth	mm 246x840x840		298x840x840				
	Panel	Height x Width x Depth	mm 35x950x950						
	Net weight	Unit+Panel	kg 24+5.5		27+5.5				
Panel+Remote control			T-PSA-36W-E+RCN-T-36W-E, T-PSA-36W-E+RC-E3						
Outdoor unit	Exterior dimensions	Height x Width x Depth	mm 750x880(+88)x340		845x970x370				
	Net weight		kg 60		74				
	Type of compressor		Rotary						
Ref.control		EEV							
Ref.amount precharged		kg(m)	2.95(30)		3.8(30)				
Ref.piping size	Liquid/Gas	ø	9.52/15.88						
Range of usage	Ref.piping length		m 50						
	Vertical height difference	between O/U and I/U	<O/U	30					
		>O/U	15						
Limitations	Air temp.	Cooling	I/U	18~30					
			O/U	-15~43*2					
		Heating	I/U	18~30					
			O/U	-10~24					

The data are measured under the following conditions(ISO-T1).

Cooling:Indoor temp. of 27°CDB, 19°CWB, and outdoor temp. of 35°CDB. Heating:Indoor temp. of 20°CDB, and outdoor temp. of 7°CDB, 6°CWB.

*1 : Indicates the value in an anechoic chamber. During operation these values are somewhat higher due to ambient conditions.

*2 : If a cooling operation is conducted when the outdoor air temperature is -5°C or lower, the outdoor unit should be installed at a place where it is not influenced by natural wind. If wind blows, the low pressure will drop and compressor frequency will increase, this will cause the capacity to drop and may cause the unit to break down.